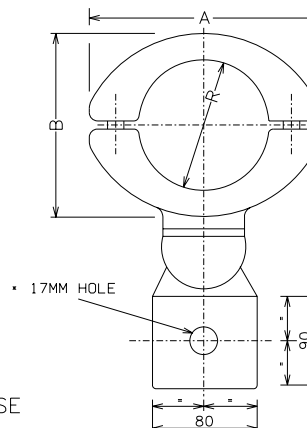



DIMENSIONS 120mm	
R	= 120mm
A	= 180mm
B	= 142mm

DIMENSIONS 80mm	
R	= 80mm
A	= 140mm
B	= 102mm

NOTE :
DRAWING NOT FOR
MANUFACTURING PURPOSE



SAP MATERIAL No.:		0206345						
SHORT DESCRIPTION:		CLAMP,TUB BUS/PALM T/OFF TBPT120 D6117						
TECH. DESCRIPTION:								
TUBULAR BUS PALM TAP-OFF CLAMP * TYPE : TBPT120 *								
CAST IN GRADE LM6 ALUMINIUM TO BS1490 *								
TUBE SIZE : RUN -: 120mm/STEM -: PAD *								
1 x 17mm DIA HOLE DRILLED IN CENTRE OF PAD *								
RATED CURRENT : 1350 AMP *								
ESKOM DRAWING No. D-DT-6117 *								
SAP MATERIAL No.:		0211421						
SHORT DESCRIPTION:		CLAMP,TUB BUS/PALM T/OFF TBPT80 D6117						
TECH. DESCRIPTION:								
TUBULAR BUS PALM TAP-OFF CLAMP * TYPE : TBPT80 *								
CAST IN GRADE LM6 ALUMINIUM TO BS1490 *								
TUBE SIZE : RUN -: 80mm/STEM -: PAD *								
1 x 17mm DIA HOLE DRILLED IN CENTRE OF PAD *								
RATED CURRENT : 1350 AMP *								
ESKOM DRAWING No. D-DT-6117 *								
ITEM		:- CLAMP TUB BUS/PALM TAP-OFF TBPT120 D6117						
MATERIAL SPECIFICATION		:- GRADE LM6 ALUMINIUM TO BS1490						
CORROSION SPECIFICATION		:- N/A						
STANDARD SPECIFICATION		:- N/A						
ESKOM SPECIFICATION		:- ESKSCAAS1						
TEST & CERTIFICATION REQUIREMENTS		:- ESKSCAAS1						
INSPECTION		Yes	No	ESKOM RELEASE NOTE		Yes	No	
IDENTIFICATION:- INDELIBLE MANUFACTURES TRADEMARK & PART No. ON ALL ITEMS								
3	CURRENT RATING CORRECTED FROM 2500A TO 1350A		P.A.T.	T. NKAMBULE		07.07.2009		
2	SHORT DESCRIPTIONS CORRECTED		N.M.	M. SHUTER	M. SHUTER	17.04.2009		
1	(UNDRILLED) REMOVED. 2300 AMP ADDED. 17mm DIA HOLE SPECIFIED. CLAMP TBPT80 (SAP 0211421) ADDED.		VvZ	JFS	C.CLARK	05/11/2004		
REV	REVISION DESCRIPTION		BY	CHKD	AUTH	DATE	REF. DRAWINGS	
AUTH:	J.F. SCHOLTZ	DATE:	19/09/2003			SAP No:		
CHKD:	J.F. SCHOLTZ	DATE:	19/09/2003			0206345		
						0211421		
DRAWN:	V. van ZWEEL	DATE:	03/03	D-DT-6117		SET	SHEET	
						1	1	3